

Sunday

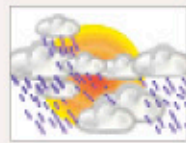
POSSIBLE RAIN

WIND: SE3-4

HEAT STRESS 26

UV INDEX 3

21°/17°



malta today every sunday

16 November 2003 – issue number 210

Your fastest growing newspaper

MLP vigilance board stops Sharon Ellul Bonnici's Euro election bid

Kurt Sansone

SHARON ELLUL Bonnici, the former No2EU campaigner vying for one of the eight Labour Party candidatures for the European Parliament elections has had her bid turned down by the MLP Vigilance Board. The decision was the second blow

in as many weeks for Ms Ellul Bonnici's aspirations to grace the seats of the European Parliament. Former deputy leader George Vella had also refused to endorse her candidature, *MaltaToday* can reveal.

The Vigilance Board seems to have objected to declarations made by Ms Ellul Bonnici in the past that the MLP should join the eurosceptic EDD

grouping in the European Parliament rather than the European Socialists. They also sought clarifications on Ms Ellul Bonnici's ties to other eurosceptic organisations such as No2EU and TEAM, in which she held official posts.

However, Ms Ellul Bonnici has appealed the decision of the Vigilance Board *MaltaToday* has

learned. She is being represented by lawyer and Labour MP Anglu Farrugia. Yesterday both Ms Ellul Bonnici and Dr Farrugia were seen leaving the Labour headquarters minutes before the start of a press conference in which the media were given details of the general conference to be held next Tuesday to select the official Euro-MP candidates.

Many in the party's national executive and administration are uncomfortable with Ms Ellul Bonnici's candidature.

They fear that if elected to the European Parliament, Ellul Bonnici will end up flirting with the EDD group rather than working within the Party of European Socialists.

Continues on page 2

Sant's hands are tied in new administration

ON THE outside it may seem as if the new Labour administration and national executive are a united front, but just below the surface party delegates can spot a game of alliances, which sees Alfred Sant in a weakened position.

Deputy leader Michael Falzon leads a strong alliance that includes secretary general Jason Micallef, deputy president Louis Gatt, president Stefan Zrinzo Azzopardi and education secretary Aleks Farrugia.

Alfred Sant can rely on the loyalty of treasurer Tommy Dimech, who only managed to pip Michael Falzon's man, Ray Sillato, by a mere six votes at the

recent administrative elections. Dr Sant may also find loose support in the likes of deputy leader Charles Mangion, International secretary Joe Mifsud and party whip Joe Mizzi.

The other member of the administration, Ray Azzopardi, TV presenter cum public relations nice guy, appears to be getting closer to the Michael Falzon clan by the minute, but is walking a tight rope.

The situation in the administration and national executive has led many a delegate to say that Alfred Sant's hands are now tied.

Continues on page 2



Ta' Xbiex: Not all that floats at the yacht marina is to be admired.

Photo by Pippa Zammit Cutajar

Sportsmania magazine and recipe inside

Lobster's 25-minute ride to hell

Kurt Sansone

A MALTESE man nicknamed Lobster is the mastermind behind the transportation of illegal immigrants from Malta to Sicily according to an investigative report published in Italian magazine

Il Giornale.

Groups of between 35 and 40 illegal immigrants are hastily transported to the Sicilian coast in the dead of night by powerful speedboats departing from St Paul's Bay and its environs.

Continues on page 4

"Some of the Maltese soldiers would sell me a packet of cigarettes for 10 dollars. I sold some of my wife's gold for hundred dollars, and I was given eight packs of cigarettes in return"

See story on page 3

B.R.E.Ltd.
Locker Street,
Sliema.

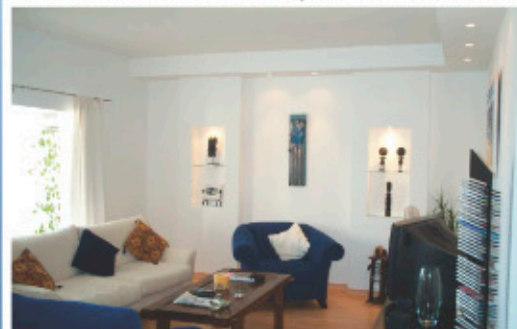
e-mail:bernards@bre.com.mt



Tel: 21343047,
21343053.
Fax: 21323560.

http://www.bre.com.mt

ST. JULIANS Lm86,000
A marvelous 6th floor extremely well appointed bright APARTMENT finished to very nice standards to include parquet flooring, gypsum plastering and brand new bathrooms. Comprising hall, sitting/dining with large terrace, fitted kitchen/breakfast, 3 bedrooms, bathroom, double shower (ensuite), private parking area, air-conditioning and fitted wardrobes. This apartment commands unobstructed sea views and is maintained by a full-time caretaker.



SAN PAWL TAT-TARGA Lm198,000
A remarkable SEMI-DETACHED VILLA stupendous in all aspects, prominently situated in this highly established residential area. Its generous accommodation comprises a welcoming entrance hall leading to sitting room and dining room (both overlooking pool area), kitchen/breakfast with living area, 3 spacious bedrooms (all with balconies + main with shower ensuite), 2 bathrooms, washroom, underlying basement with independent flatlet, 5-car garage, surrounding garden and a beautiful swimming pool with a large deck area and pool showers.



MADLIENA Lm265,000
A marvellous DETACHED FARMHOUSE meticulously converted to retain its original features, prestigiously situated on high grounds on a green belt and commanding uninterrupted sea views. Comprising entrance hall, sitting room with functional fireplace, dining, fully fitted kitchen/breakfast overlooking its totally private and secluded back garden, 3 double bedrooms, 2 bathrooms (1 ensuite), utility room and a very large swimming pool.



SWIEQI Lm110,000
A recently upgraded top floor fully detached MAISONETTE having a high standard of finish and lots of natural lighting. Comprising hall, sitting/dining all laid with parquet floors, fully fitted kitchen/breakfast with appliances, living room overlooking a lovely garden terrace, 3 bedrooms, 2 bathrooms (1 ensuite) and front garden.



Telephone enquires also taken on Sunday